

Revenue Review

Victoria Cattle

Further findings from David Casey of Victoria, has yielded some key info on the Cattle overprints. David turned up a sheet of the \$2 value [fig 1], which has finally given out its secrets of the 'flat back C'. Firstly I have added a huge scan of this sheet at ozrevenues.com/pics/cat1.jpg for those of you who wish to study it much closer. Secondly we can now plate the 'flat back C' to stamp 1 rows 1 & 8. These are the center two in figure 2, with the top 'CATTLE' in figure 2 being the regular one. A much less defined 'flat C' can be found in positions, stamp 1 row's 7 & 9. The only deformed 'CATTLE' sits at stamp 1 row 10, which is the lower 'CATTLE' in figure 2. A ghostly 'E' can be found in rows 4-6 stamp 10. Last but not least you can find a dropped 'CATTLE' [fig 3] sprinkled throughout the sheet.

Ok one more that shows up, is the base break in 'C' of VICTORIA which appears to be a 'die' flaw and can be found on every stamp. Thanks for sharing this with us David.

Cancelled

A rather nice £500 Queensland Impressed duty [fig 4] was recently auctioned selling for \$180]. This stamp not only had the colourless impressed cancel from the Queensland Treasury, which were placed into presentation packs and sold to the public for £1, it also had the scarce violet 'CANCELLED'. No records on this cancel can be found. I had the 63 from this set in pairs with this cancelled overprint on, so I'm assuming these may have been remainders of the remainders! Maybe you are reading this and can fill in the blanks?

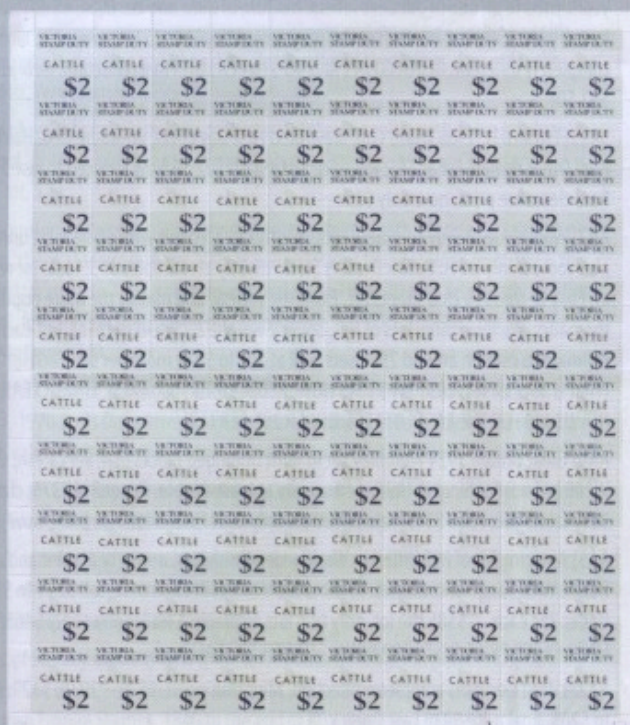


Fig 1

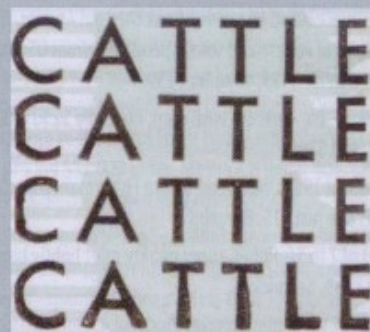


Fig 2

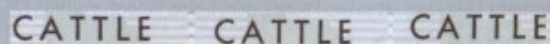


Fig 3

Colour

Figure 5 is yet another colour variation to add to the ever-growing list of 1917 Victorian Railway 'wing' issues. Note this has the perf and rouletted at right. Please update your records to include this.

High Tax

Last year a scarce 1930's bi-colour £1 Tax installment from Victoria was up for auction. This copy was the first to be recorded. Figure 6 now doubles the known copies recorded to have survived. Selling in auction for a tad over \$100 I feel was cheap. I'm sure the under-bidders will be kicking themselves, as these beauties rarely turn up.

Perf x imperf

Figure 7, like figure 6, rarely turns up. The problem

with this issue is the fact many sheets were very poorly perfed and with figure 7 being a left margin copy. I doubt it is in fact a true imperf at right. Imperf margin copies are well recorded. If this was in a pair then there would be no doubt in my mind but....

Idiot

Alas, I spied figure 8 on eBay purporting to be an inverted specimen. You could argue, "well it is inverted"!! well, ok yes it is, but this was not applied by the State Government Printer but by a conman in his back shed! Beware of idiots selling forged material because if you buy it, you will end up being the idiot! I also noticed a few revenues being copied. These are easily picked as copies as they are without watermark. Issues being copied



Fig 4



Fig 5



Fig 6

Revenue Review

that were issued on unwatermarked paper again are easily picked. Just put your eyeglass on them and you will see the poor copying. If in doubt, phone a friend or email me.

Roulettes

Last issue Tasmanian duty stamps were separated by two different rouletting machines. Figure 9 shows roulettes 6.75 & 4.5. Several values are found with both, which doubles the fun.

Wine

Peter Smith has sent me this unrecorded Australian Wine Producers Association revenue [fig 10] to add to my online listing of these beauties. I have listed the colour as 'Grape-green'. Many thanks for sharing this Peter.

No Name

New Zealand railway charges stamps are not only well collected but also well documented 99.9% have a station name overprinted on them, so when items like figure 11 turn up without a station name you know there will be a collector blood bath to win such a cracker of an item. Of course the giveaway is the 'Palmerston North/Parcels' violet cancel.

While I'm on New Zealand, figure 12 rarely turns up, so if you see one with any value within just buy it, it's that simple, as you may be waiting a while before another comes along.

WWI Patriotic

A new addition to my free online catalogue is a priced listing of the World War One Patriotic Cinderella labels of Australia. I have added a link within my revenue catalogue page. Why Cinderella's you may ask? Well probably because



Fig 7



Fig 8



Fig 13

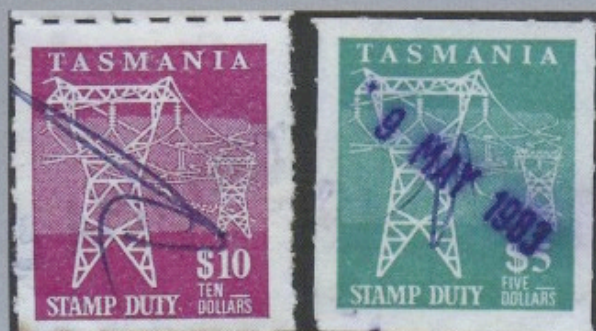


Fig 9



Fig 10

Dave Elsmore

they sort of go hand in hand with revenues, as most revenue collectors will swing both ways, and I personally felt the need for a good general listing that is consistent with today's trends. I am working on a WWII version of this, which should be out by the time you read this. When you find time to have a look you will note just a few black & white photocopies, which I have used due to the lack of availability or sourcing a colour scan. I am hoping you the reader, can assist me in filling in the colours! Figure 13 is the unissued Delandre proof label. It sits in an unissued proof sheet of many countries [see web page], and is yet to be split up. I have added the Delandre labels to the on line WWI patriotic book as they have an Australian connection, but was printed outside of Australia. These of course are at the tail end of the web page. If you have something I do not list or can improve on any of the black & white or blurry scans I would

love to hear from you.

Perfin Corner

The VOCo Perfin has been well documented and is one of the common patterns to find on postage stamps, but figure 12 is the very first to be recorded on a 1d revenue value. Vacuum Oil started operating in the United States in the 1860 and in 1895 became the first oil company to be established in Australia. Up until that time, foreign oil products were marketed in Australia via agents. Vacuum Oil first opened offices in Melbourne and were incorporated in 1904 which is the era figure 14 comes from.

**I can be contacted by mail: P O Box
66 Springwood 4127 Queensland or
an Email link from my web site
ozrevenues.com or perfins.com.au**



Fig 11



Fig 12

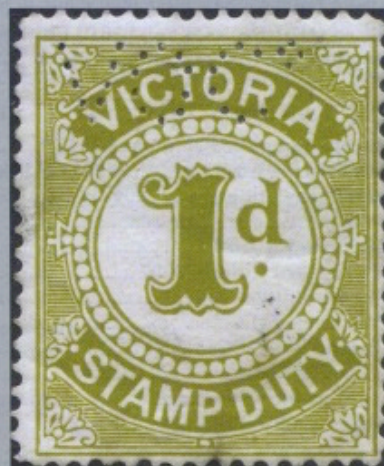


Fig 14