

Cinderella Corner

Australian Registration Labels

Welcome to the December edition of *Cinderella Corner*. This piece offers a snapshot of the rich landscape involving Australian registration labels, and it explores a few different examples of them, all affixed to covers. It is hoped that other articles will follow this piece, thereby further building the 'registration narrative'. In crafting this article, I have drawn closely upon Kevin J. Burt's opus text: *Post Office Registration Labels of Australia and its Territories, including Papua and New Guinea*. It is a formidable catalogue that covers significant breadth in the field of Registration Labels. I am also grateful to Kevin for his assistance in the construction and editing of this article. Reference is made to the book's classification of registration labels in describing the covers illustrated - these are in bold type

While registered mail in Australia has existed for over 150 years, the first use of a registration label in this country dates to 1908, following a recommendation to the Australian Postmaster General's Department. Since this time, a plethora of different



Fig 2

labels have been issued across each Australian State and Territory, before Commonwealth examples were issued from 1924.

Australian Imperial Force (AIF)

Several different AIF registration labels were issued for use at AIF Post Offices during World War I. They feature on envelopes with British or Egyptian stamps. Alongside these labels, a provisional label has also been identified, and it was mainly used in 1916.

The red and black registration label illustrated in Figure 1 dates to 1916. It is classified **M1c**, which is primarily defined by the size of the 'R', and the rouletted presentation only on the left side of the label. The cover is postmarked 25 July 1916, and the label features the number 63.

R.A.A.F.

R.A.A.F. registration labels were first issued around 1942. They were available only at R.A.A.F. Post Offices in Adelaide, Brisbane, Darwin, Melbourne, Perth, Sydney,



Fig 1

Vito Milana



Fig 3

and Townsville.

The black and red label illustrated in Figure 2 was issued at the Darwin R.A.A.F. Post Office, label classified **M5b**. Perforated 12.6 on all four sides, the label was issued in 1945 and features the number 8487. The R.A.A.F. labels were also issued in much scarcer rouletted varieties, also issued in 1942, and these types had significantly larger numerals.

7th World Rover Scout Moot

Over 100 different registration labels have been issued to commemorate events in Australia, both philatelic and non-philatelic, since the 1920s. One example is illustrated in Figure 3. This label, printed in green, was issued to celebrate the 7th World Rover Scout Moot in Victoria. The event ran for 12 days, commencing 27 December 1961 and ending 7 January 1962. The label is numbered 0034 and a limited number was printed. The label features on a cover postmarked on the opening date of the 7th World Rover Scout Moot: 27 December 1961. It is per-

forated 9.5 on all four sides, with 4.5mm high numerals, and is classified **M7d**.

World's Poultry Congress

The 12th World's Poultry Congress was held in Sydney across nine days, from 10 August to 18 August, 1962. To help commemorate the event, a special registration label was issued, as illustrated in Figure 4. Perforated on all four sides, the label features the purple provisional text: *XIITH WORLD'S POULTRY CONGRESS*

SYDNEY, N.S.W. The label is numbered 058 and it features on a cover with a pictorial 16 August 1962 postmark along with a cinderella issued to also help celebrate the event.

Cunnamulla

The Registration label illustrated in Figure 5 is an example of several different 'wartime label' types. These were mainly issued mainly in Queensland, and were printed in both blue and red, with blue, black, or red numerals. They were then continued to be

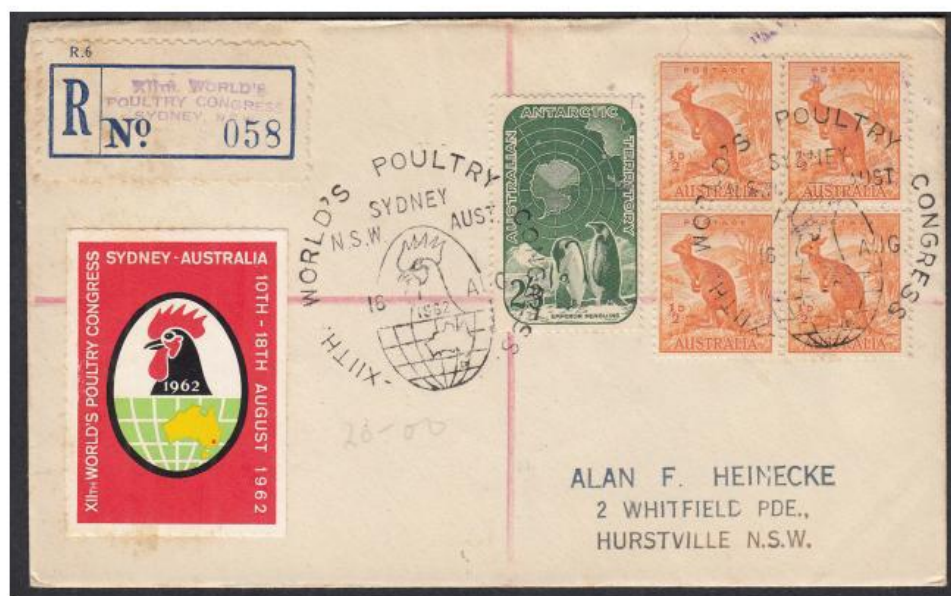


Fig 4

Cinderella Corner



Fig 5

used for several years after the end of World War II. The illustrated label features the Queensland town name *Cunnamulla*. It is rouletted on the top and base and is imperforate on both sides. The label features the number 417 (in black numerals) and is affixed to a Queensland cover postmarked 19 February 1945. This type is classified **M9d**.

The Gap

The label illustrated in Figure 6 is classified **M30**. It first appeared in 1971 following a shortage of earlier issued registration labels, and was issued widely throughout Queensland as a provisional label. The illustrated M30 in Figure 6 is regarded as a provisional label, even though it features the blue printed text: *THE GAP, Q. 4061*, with the printing added by the Post Office. The label is rouletted 4.5 on all four sides and features the number 369 in blue print. It features on a cover postmarked many years after the labels release: July 1991.

Brisbane

The earliest example of a Queensland registration label is 1908, and the landscape including early

Queensland registration labels is ever-changing. The label illustrated in Figure 7 was issued in 1910 and is classified **Q1b**. It is rouletted 7.0 in the colour of the label and features the city name *BRISBANE* along with the number 2860. The label is affixed to a cover postmarked 5 September 1910.

Adelaide

South Australia issued its own registration labels from 1 October 1908. The label illustrated in Figure 8 was issued in 1910, and is classified **S2b**. This type was only available at Adelaide's GPO. The red and white label is rouletted 13.5zz on three sides, in the colour of the label. It is affixed to a cover with an Adelaide postmark date



Figs 6 & 7 (top)

Vito Milana



on 5 September 1911. The earliest recorded date for a S2b is 22 September 1910.

Scottsdale

Tasmanian registration labels are some of the scarcest available nationwide. Like South Australia, they were also issued from 1 October 1908, with the earliest identified on cover on 9 October 1908. After an initial experimental period in 1908, the label illustrated in Figure 9 was used. It is perforated 11.5 on three sides, with large black 5.5mm high numerals. This label is affixed to cover postmarked 1911 and features the Tasmanian town name *Scottsdale* and the number 784. It is classified **T2a**.



No. 7 Pumping Station

The label illustrated in Figure 10 is perhaps the scarcest presented in this *Cinderella Corner*. It is classified **W11**, and was one of three types issued in the same sheet of 25 (5 x 5), a very common occurrence in Western Australia labels. The earliest date for the label is 1925, too. The label is affixed to a cover postmarked 13 November 1934, and alongside the black numerals 920, it features the text *No. 7 PUMPING STATION*.



The Number 7 Pumping Station was located at Gilgai, Western Australia, on the Goldfields Water Supply Scheme. It was located between Number 6 Pumping Station at Ghouli, and Number 8 Pumping Station located at Dedari.

GPO Melbourne

The final Registration label explored in this article is from Victoria. Victoria is the state with the lowest number of label types, and the earliest recorded cover with a Victorian label dates to 1909. The label illustrated in Figure 11 is classified **V1**. It is scarce and perforated 11.5 on all four sides. The label was issued from GPO Melbourne and features the number 934 in black print. It is affixed to a cover postmarked 24 September 1909, making it the earliest label explored in this piece.



Kevin Burt's book is still available, details and ordering at the Royal Philatelic Society of Victoria website - www.rpsv.org.au

Top to bottom:
Figs 8, 9, 10 & 11