

# Cinderella Corner

## Space Covers – Part II

Welcome to the September edition of *Cinderella Corner*. This issue serves as an extension to last September's article that explored some of the cinderella labels that adorn Australian space-themed covers. These items, along with last year's investigated pieces, serve to highlight only a fraction of the rich tapestry of space covers that exist not only in Australia, but worldwide. I once again direct the reader to cover collector from Victoria, Simon Cronk, who has established and maintains an excellent online resource that documents many Australian space covers: <https://www.simoncronk.com/space-australia/>. He categorises this interesting thematic area into sections, including *rockets* and *missions*. Nine covers with different space-themed cinderella labels are now explored, and most of these are drawn, with the approval and gratitude, from Simon Cronk's collections.

## NASA – AWA

The scarce label illustrated in Figure 1 dates to 1965 and is a variant of the label illustrated in Figure 3 of last September's article. It too is large, measuring 82.5mm x 51.5mm, and is imperforate on all four

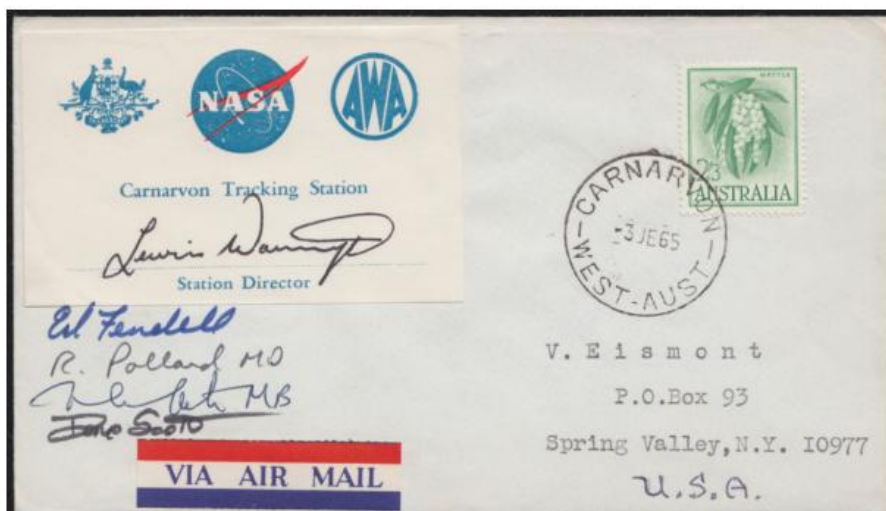


Figure 1

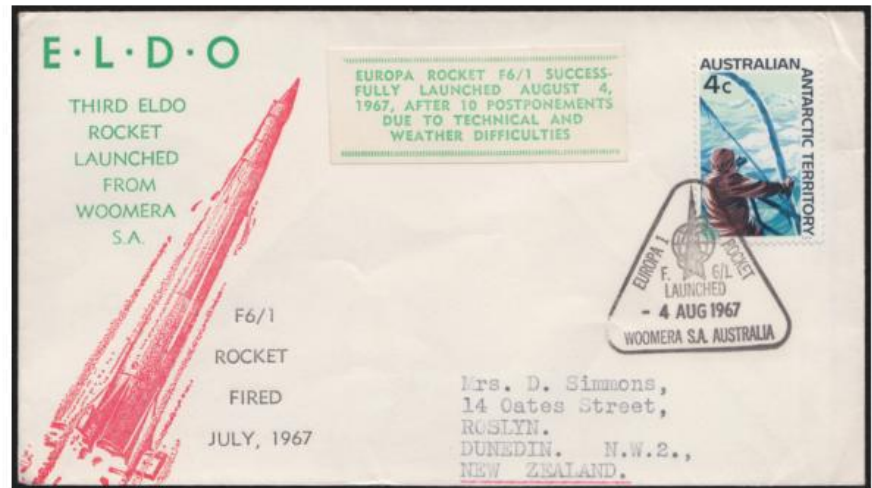


Figure 2

sides. Coloured white, blue and red, it features the text: *NASA / AWA / Carnarvon Tracking Station / Station Director*. The AWA refers to the Amalgamated Wireless Australasia, an Australian contractor designated to the operating and maintaining of the Tracking Station at Carnarvon. The Station Director at the time, Lewis F. Wainwright, held several positions in the space industry over his career, and his signature is prominently placed on the label. I extend my thanks to Simon Cronk for providing the scan and dimensions of this wonderful label and cover. The cover is postmarked at Carnarvon, Western Australia, on 3 June 1965 and also features an Air Mail vignette affixed to its front. Other signatures are also featured on the cover, and these are all space-related.

## Europa Rocket 1967

The European Launcher Development Organisation (ELDO) was a former European space research organisation responsible for a three-stage rocket named 'Europa'. Under ELDO's funding, a total of 10 launches occurred, and the label illustrated on the Arthur Bergen cover shown in Figure 2 celebrates the third rocket launch, over 50 years ago, in 1967. The green and white label is imperforate on all sides and measures



# Vito Milana

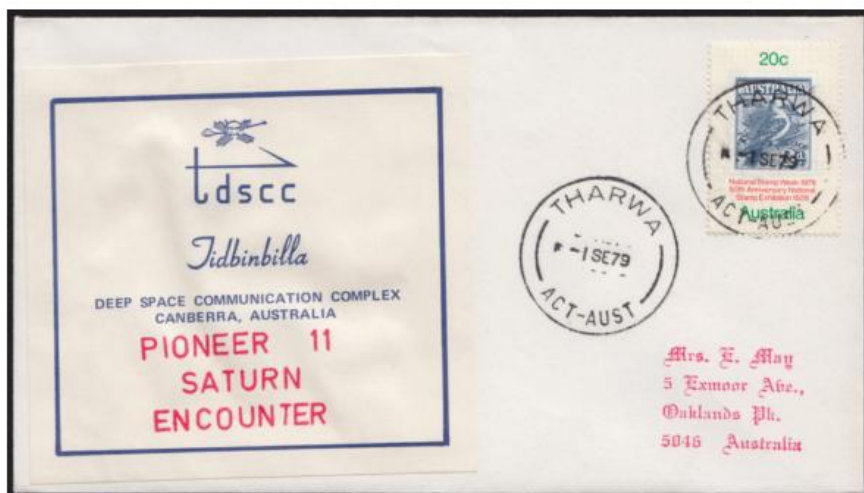


Figure 3

58mm x 22mm. It features the text: *EUROPA ROCKET F6/1 SUCCESSFULLY LAUNCHED AUGUST 4, 1967, AFTER 10 POSTPONEMENTS DUE TO TECHNICAL AND WEATHER DIFFICULTIES*

In the landscape of space-themed Australian cinderellas, this one, as illustrated in Figure 2, is scarce.

## Tidbinbilla Deep Space Communication Complex

The Tidbinbilla Deep Space Communication Complex (TDSCC), later known as the Canberra Deep Space Communication Complex (CDSCC), was opened in 1965. It is located southwest of Canberra and originally served as a Deep Space Tracking Station. The label illustrated in

Figure 3 is a fifth type in the *tdscc* series, with four others discussed in last September's article. The navy and white cinderella measures 87mm x 81mm and is imperforate on all four sides. It features the text: *tdscc / Tidbinbilla / DEEP SPACE COMMUNICATION COMPLEX / CANBERRA, AUSTRALIA*. Underneath this text, a red handstamp with additional text is featured: *PIONEER 11 SATURN ENCOUNTER*. The cover is postmarked 1 September 1979 at Tharwa,

Australian Capital Territory.

Pioneer 11 was the first spacecraft to study Saturn up close. The 1 September 1979 postmark signifies the official *Saturn flyby* date, which occurred more than six years after its launch. In total, Pioneer 11 experienced a mission elapse time of more than 22 years.

Many thanks, once again, to Simon Cronk for providing scans of this label and cover.

## Apollo 12

The uncommon *Apollo 12 Journey to the Moon* cover illustrated in Figure 4 offers a small black and white label, measuring

52mm x 17mm. It features the text: *APOLLO 12 / Charles Conrad – Richard Gordon / Alan Bean*

Apollo 12, which operated from 12 to 24 November, 1969, was the sixth crewed flight in the USA Apollo program; it was also the second to land on the moon. The 21 November 1969 postmark to the immediate right of the cinderella label coincides with the orbital departure date.

The three individuals mentioned on the label present with the following basic details:

Charles Conrad: was an American NASA astronaut and aeronautical engineer who commanded the Apollo 12 space mission

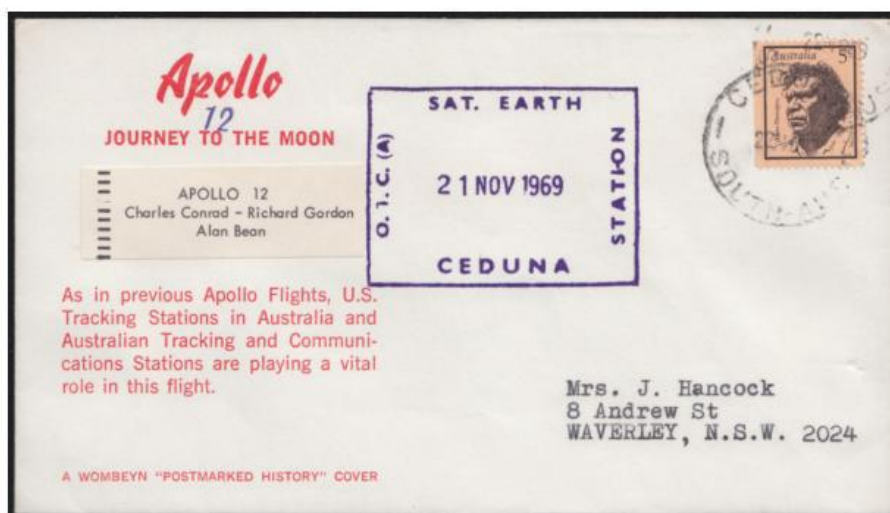


Figure 4



# Cinderella Corner

Richard Gordon: was an American naval officer and NASA astronaut who served as the command module pilot for Apollo 12.

Alan Bean: was also an American naval officer and NASA astronaut. He was also the last living crew member of Apollo 12.

## NASA Communications (Canberra)

The large label illustrated in Figure 5 is one of the more colourful of the space-themed Australian cinderellas. Multicoloured and measuring 66mm x 68mm, the imperforate label features the text: *N.A.S.A Communications / CANBERRA - AUSTRALIA*

The label effectively celebrates Canberra's association with NASA in the 1980s, including the CDSCC, which was part of NASA's Deep Space Network.

The label features several space motifs, including an ascending spaceship, and another orbiting the earth.



Top : Figure 5 Bottom : Figure 6

## Project - Helios

Tidbinbilla Valley, in the Australian Capital Territory, has been gazetted as a nature reserve and national park for more than 50

years. Within the valley existed Tidbinbilla Tracking Station, which later shifted names to the previously mentioned CDSCC.

The large cream and grey label illustrated in Figure 6 recognises the Helios Project associated with Tidbinbilla where, in 1974 and 1976, the Helios spacecraft was launched and successfully circled the sun. The postmarked 15 January 1976 date on the cover illustrated in Figure 6 suggests that the cover and label recognises the efforts of Helios-B, which was launched five days earlier on 10 January 1976. The label is imperforate, measures 58mm x 90mm, and features the text: *TIDBINBIL-*



Figure 7

# Vito Milana



Figure 8

LA, AUSTRALIA / PROJECT – HELIOS / UNITED STATES – GERMANY.

Crossing flags from the USA and Germany are also featured on the cinderella, along with a small illustration of Helios-B in orbit.

## CSIRO

The Parkes Radio Telescope is a part of the Australian Telescope National Facility. It commenced operation in 1961 and has an impressive diameter of 64 metres. As recent as 2012, it played a supporting role in tracking NASA's Curiosity rover.

The cinderella illustrated in Figure 7 is identical to the one featured in last September's article, except for its colour. It measures 46mm x 69mm and is imperforate on all four sides. Coloured green and black, it features the central image of the Parkes Radio Telescope, along with the text: *CSIRO / CSIRO VISITORS' CENTRE / P.O. BOX 276, PARKES, N.S.W. 2870. / PARKES RADIO TELESCOPE / SCIENCE FOR AUSTRALIA*. The label is affixed to a 26 April 1990 Parkes postmarked cover.



Figure 3

## Voyager

The cinderella illustrated in Figure 8 is a second one directly linked to Tidbinbilla. Imperforate on all four sides and measuring 40mm x 50mm, the label is multicoloured and features the text: *TIDBINBILLA AUG. 1989 / Voyager / NEPTUNE*

The label celebrates the spacecraft Voyager 2's closest approach to Neptune on 25 August 1989. Interestingly, Voyager 2 is still on an extended mission to study space and, as of July 2021, after more than 43 years since its launch, has reached a distance of more than 19 billion km from

earth.

## U.C.C.C. Space Unit

The final space-themed Australian cinderella explored in this article is rectangular, small, and measures 52mm x 18mm. As illustrated in Figure 9, the address label is imperforate and features the text: *SPACE UNIT / U.C.C.C. / Box 133, Glenelg / 5045, Australia*

The U.C.C.C. was run by famed philatelist and cinderella producer Jack Koch and is an abbreviation for the 'Universal Cover Collectors Club'. The Space Unit, as illustrated on the label, still exists today.