

# Revenue Review

## Queensland

I note with interest much of the Francis Kiddle Qld revenue sale by Millennium Auctions has reappeared in another Australian auction house. I guess they must have thought they had a better cliental, but in saying that 95% was passed in. So why bother tying up good money, thinking you have a better chance to sell it? My guess is it's just a gamble which sometimes pays off. The lesson to be learned here is: 'If you see something in auction you may want to add to your collection you best grab it first time out'. Figure 1 shows the cover of a collection of Queensland Specimen Duty Stamps. This is the earliest 'presentation' folder I have recorded with figure 2 one of the stamps from it.

Further on buying from auction houses, if you have been following the 'Spink' hoard of Australian state beer duties I wrote about last year, the New Zealand beer duty lot reappeared in Millennium Auctions in its entirety with much of it bought by Auckland City Stamps. I just wonder how many more times these will reappear in an auction before they finally reach a collector.

## New Zealand Rails

While I am chatting about New Zealand, a 'Part Lot' parcel stamp has come up on eBay [fig 3] incorrectly described as being from Australia. I had not recorded this before and wonder how many 'Part Lots' it takes to make a 'Complete Lot'. Maybe a reader can enlighten us all on a possible series of issues and maybe some dates.

## Petrol Ration

Last month I wrote about Petrol Ration tickets, and a new publication by Brisbane collector George Shea. I ran into George at the Brisbane ANDA show and was informed his monograph is selling well with one dealer taking 10 copies for stock. George is from the coin & banknote side of our hobby and it is interesting to see both coin and stamp collectors collecting the same areas.

## London10

London show all done and dusted with some nice medals coming back to Australia. John DiBiase collecting an international Large Vermeil [88 points]

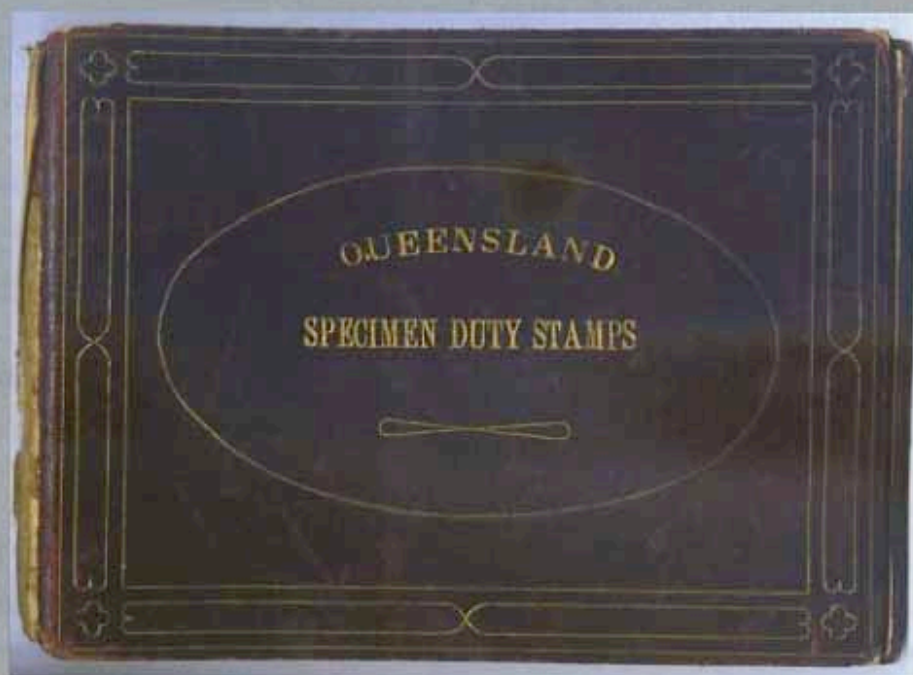


Fig. 1



# Dave Elsmore

for his Western Australia revenues, which were shown in 8 frames. My New South Wales revenues also attained 88 points, Large Vermeil but for 5 frames with my on line catalogue pulling a Large Silver so well done John and Dave [ I hear you say] on these awards.

## Lowood Creamery

Lowood Creamery used Queensland railways freight to send its goods. Railway parcel stamps can be found with a very scarce perfin 'L'. Most perfin collectors would like to own a copy, any copy for that matter. This highly prized perfin shown in figure 4 was found in a dealers stock at the Brisbane ANDA show by Colin Pezet, a Queenslander and keen Queensland railway parcel stamp collector, so keen in fact that he works for Queensland Rail. This 1d had not been recorded and if the dealer had wised up to this, he could have got four times what he sold it for, and I do know Colin would still have been happy to pay any price for it. I am glad it has gone to a good home though, as I had sent Colin to

the dealer before I managed to get to him. I had been assisting another dealer at his busy stand [sods law]. Apologies for the poor quality of the graphic, the picture was taken on my phone.

## From A little Bird

Some very keen collectors of Western Australia will be happy to know a major collection of Western Australia Revenues probably/may/should be coming onto the market next year. Many Waterlow & Sons archival proofs will be included, so you had better start saving your pennies right now. Figure 5 a Waterlow & Sons value die proof from a set of die proofs to £100, with only two such groups extant. One set from the work books so called 'dirty set' the other from the 'clean set', figure 5 being from the clean set. The problem for revenue collectors of Western Australia is, we are up against such well known identities as our friend Arthur Woo, a famous collector of birds on stamps. Figure 5 would fit nicely into Mr Woo's collection as a 'birds nest' prior to the secondary printing of the Swan vignette.



Fig. 2

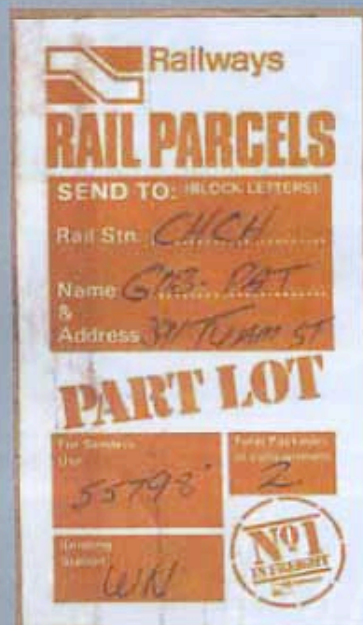


Fig. 3



# Revenue Review

## What Wikipedia Says About Railway Parcel Stamps

"In philately a railway stamp is a stamp issued to pay the cost of the conveyance of a letter or parcel by rail. A wide variety of railway stamps have been issued by different countries, and by private and state railways. Railway stamps of an unofficial or semi-official type are considered cinderella stamps. The first railway stamp was issued in England in 1846 for parcels, and Belgium has issued railway stamps since 1879. From 1891 British mainline railway companies issued *railway letter stamps* for the conveyance of letters by rail, although that service has now ceased apart from some small tourist lines."

Somewhat misleading for us down here in oz., as parcel stamps were not used to convey letters for the public, so they do fit into the revenue field, and do not belong in the cinderella field as mentioned above.

## Victoria Tax Art Work

Last up this month is a very nice printer's multi choice art work essay [fig 6] for the 1941 Tax Instalment inscribed 'VIC' for Victoria. The basic design was accepted showing the value in the upper left & right cartouche. The issued series of values only went to £5 a £10 value was not used.



Fig. 4



Fig. 5



Fig. 6